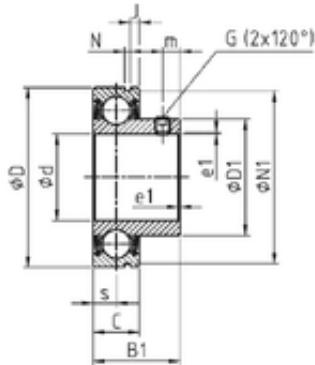




INA BRAINGS SALES JAPAN CO.,LTD.



50 mm x 90 mm x 43.5 mm SNR CUS210 deep groove ball bearings

Bearing No. CUS210

CUS210 Bearing 2D drawings and 3D CAD models

Size	50x90x20 mm
Bore Diameter	50 mm
Outer Diameter	90 mm
Width	20 mm
d	50 mm
D	90 mm
B1	43,5 mm
C	20 mm
e	1,5 mm
a	4 mm
m	9 mm
s	10 mm
D1	63,2 mm
J	3,7 mm
N	2,7 mm
N1	86,79 mm
Thread (G)	M8 x 1
Weight	0,66 Kg
Basic dynamic load rating (C)	35,1 kN
b	2.7 mm
B	43.5 mm
G	M8x1
r	1.5
S	10 mm
SW	4 mm



INA BRAINGS SALES JAPAN CO.,LTD.

C0	23.2 kN
T min.	-20 ° C
T max.	100 ° C
Recommended tightening torque for set screw	11.5 Nm