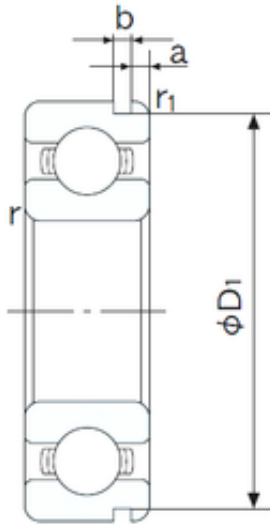




INA BRAINGS SALES JAPAN CO.,LTD.



17 mm x 40 mm x 12 mm NACHI 6203N deep groove ball bearings

Bearing No. 6203N

6203N Bearing 2D drawings and 3D CAD models

Size	17x40x12 mm
Bore Diameter	17 mm
Outer Diameter	40 mm
Width	12 mm
d	17 mm
D	40 mm
B	12 mm
C	12 mm
a	2.06 mm
b	1.35 mm
r min.	0.6 mm
r1 min.	0.5 mm
D1	38.1 mm
Weight	0.065 Kg
Basic dynamic load rating (C)	9,55 kN
Basic static load rating (C0)	4,8 kN
(Grease) Lubrication Speed	17000 r/min
Bore Type	Cylindrical Bore
Enclosure	Open
Configuration	Single Row
Bore Size	17 mm
Outside Diameter	40 mm
Width	12 mm
Fillet Radius/Chamfer	0.6 mm
r1	0.5 mm



INA BRAINGS SALES JAPAN CO.,LTD.

Groove Width	1.4 mm
Groove Diameter	38.1 mm
a (max)	2.1 mm
Dynamic Load Rating	9,550 N
Static Load Rating	4,800 N
Limiting Speed - Grease	18,000 rpm
Limiting Speed - Oil	21,000 rpm
Factor fo	13.1
Radial Clearance	0.003 to 0.018 mm
da (min)	22 mm
Da (max)	35 mm
Dx (min)	45.5 mm
ra (max)	0.6 mm
Cy (max)	2.9 mm