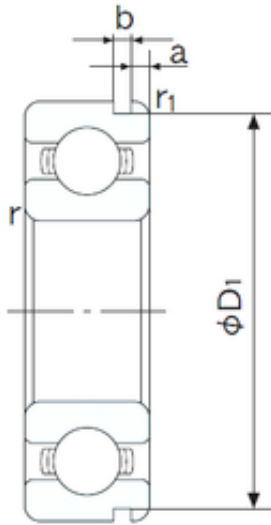




# INA BRAINGS SALES JAPAN CO.,LTD.



10 mm x 22 mm x 6 mm NACHI 6900N deep groove ball bearings

Bearing No. 6900N

6900N Bearing 2D drawings and 3D CAD models

Size	10x22x6 mm
Bore Diameter	10 mm
Outer Diameter	22 mm
Width	6 mm
d	10 mm
D	22 mm
B	6 mm
C	6 mm
a	1.05 mm
b	0.8 mm
r min.	0.3 mm
r1 min.	0.3 mm
D1	20.8 mm
Weight	0.010 Kg
Basic dynamic load rating (C)	2,49 kN
Basic static load rating (C0)	1,13 kN
(Grease) Lubrication Speed	33000 r/min
Bore Type	Cylindrical Bore
Enclosure	Open
Configuration	Single Row
Bore Size	10 mm
Outside Diameter	22 mm
Width	6 mm
Fillet Radius/Chamfer	0.3 mm
r1	0.3 mm



## INA BRAINGS SALES JAPAN CO.,LTD.

Groove Width	0.8 mm
Groove Diameter	20.8 mm
a (max)	1.1 mm
Dynamic Load Rating	2,490 N
Static Load Rating	1,130 N
Limiting Speed - Grease	33,000 rpm
Limiting Speed - Oil	38,000 rpm
Factor fo	14.0
Radial Clearance	0.002 to 0.013 mm
da (min)	12 mm
Da (max)	20 mm
Dx (min)	25.5 mm
ra (max)	0.3 mm
Cy (max)	1.5 mm